

Directions for making the flash cards.

'Who plants the flowers?'

Cut on the dotted lines horizontal across and fold on the vertical that go up and down lines.
You can either tape or glue to make the flash card.

pollen

the powder that flowers produce that helps make more flowers

www.sightwordsataglance.com



wind

the air around us that feels like a breeze

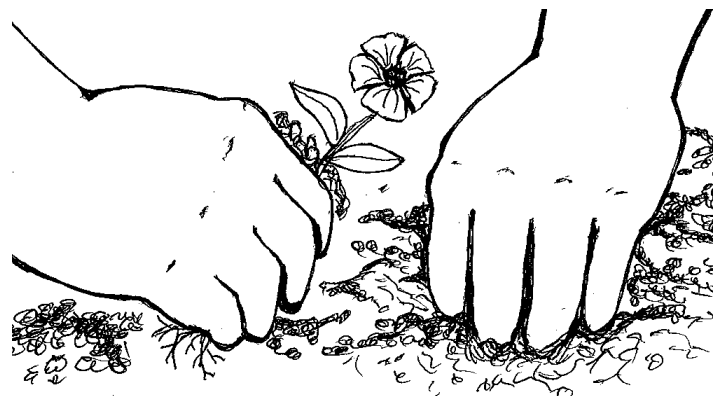
www.sightwordsataglance.com



you

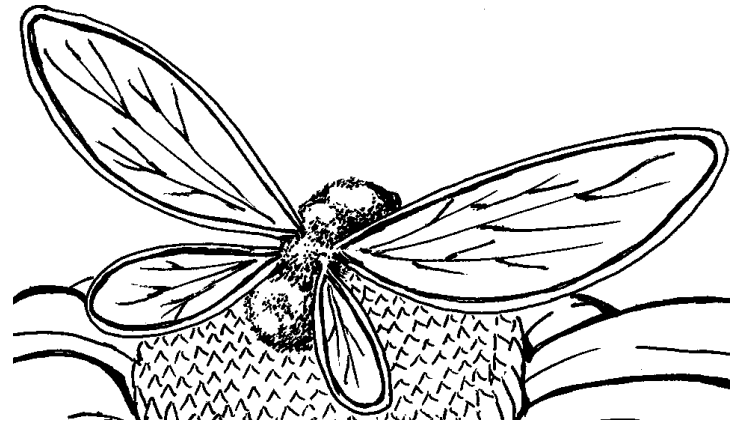
a name given by a human being to another human being that takes the place of their first or last name instead of calling them by their first or last name

www.sightwordsataglance.com



bees

insects that collect nectar from plants that have flowers



animals

usually furry mammals that carry their babies in their tummies
not birds, reptiles, or fish



flowers

the colorful silky part of the plant that helps in making more
flower plants



neighbor

a person or persons that live next door

