

COSTUMES

OUTFITS

BATH HOUSE  
PATRON



PLAIN  
AS  
CAN BE  
off  
white apron

No  
HAT or  
Bowtie

Gingham Cloth  
off  
light weight

Pastel Blue  
light denim  
in  
color

To keep -  
RED - Plaid Back  
Decked  
Playing Cards - (52)

Bottom  
Fly  
Wearers  
for Men

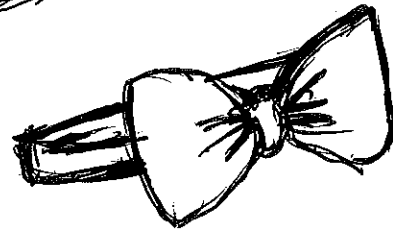


THE  
Cowboy  
HATS

The Dandy



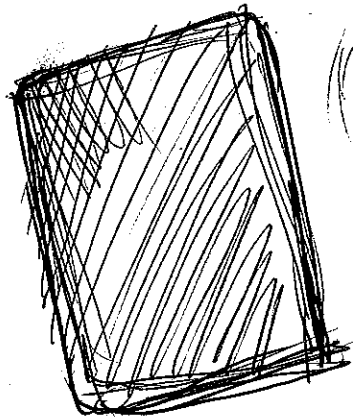
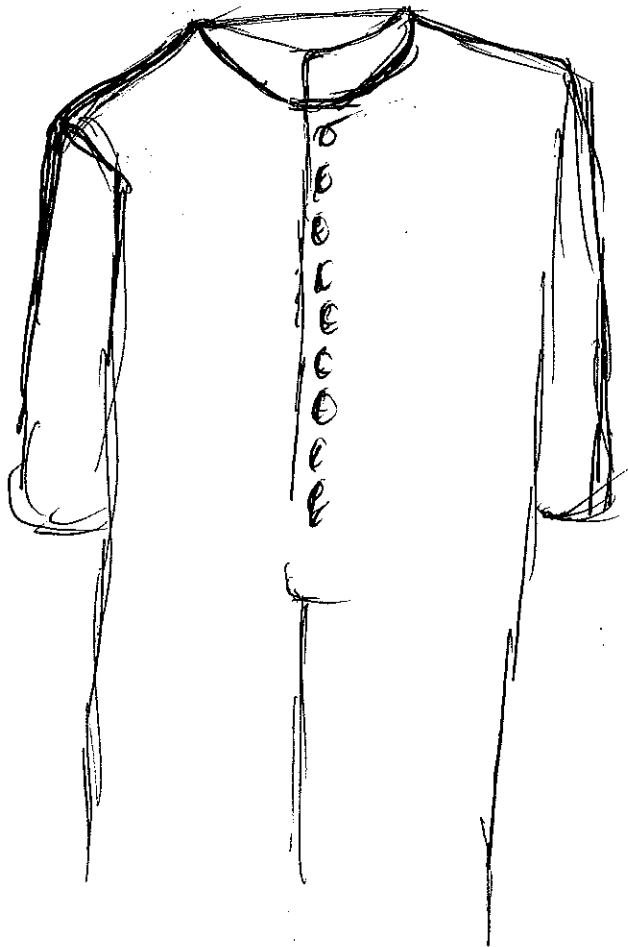
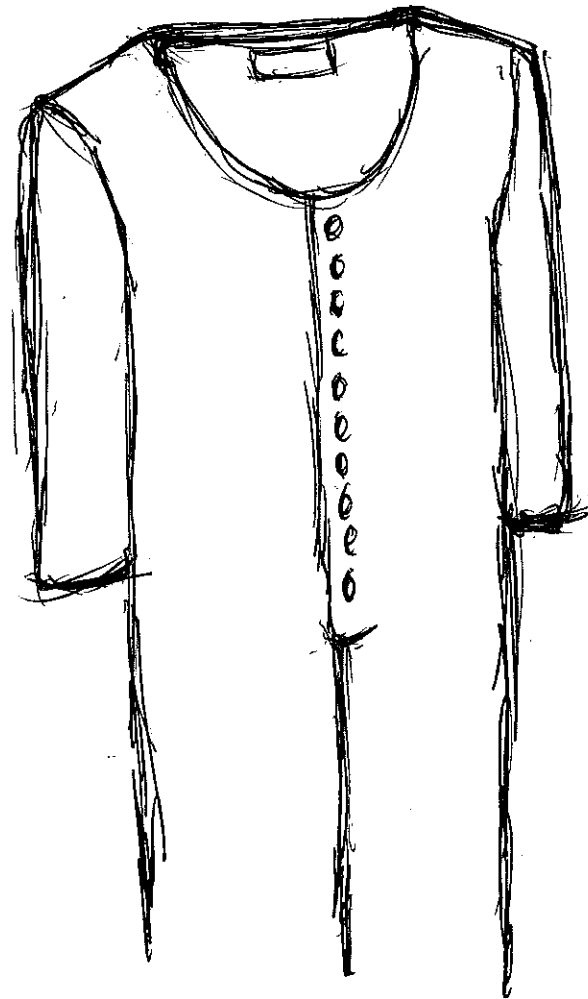
THE  
HAT



THE  
Bow  
Tie

The  
Scabbies

Long  
Johns



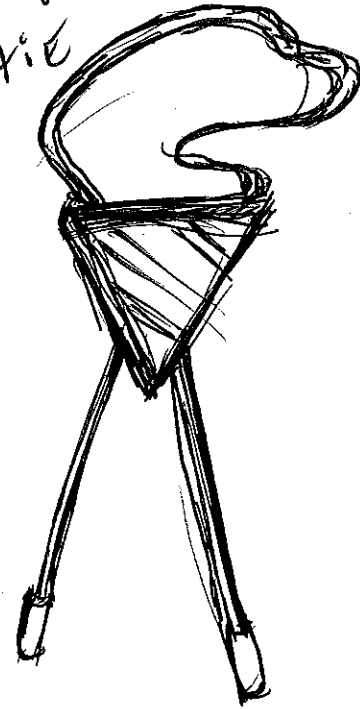


~~Red~~

The 10 gallon Cowboy  
HATS  
for the  
3 cowboys -

Doll  
Ward (A little  
Flattened)  
goes to Cool w/ Crisp Attitude  
Goo

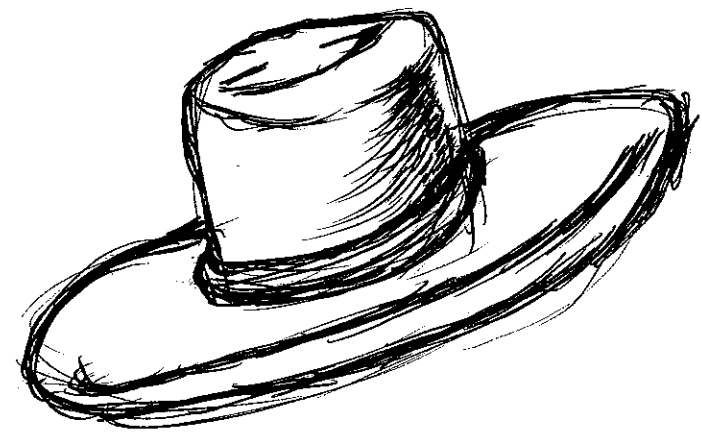
Cowboy  
tie



SPANKED  
New  
(The  
25¢ Bath  
Cowboy)

The  
TEEB  
10 gallon  
HAT  
(The irritated  
Cowboy)

The  
Hankie Chefs  
AROUND  
The Neck  
on  
Two  
Cowboys  
Red / + Blue



~~Red~~ 1